

## Condition

Dysmotility Syndrome

## Previous Treatment

Received nutrition intravenously through a Peripherally Inserted Central Catheter (PICC).

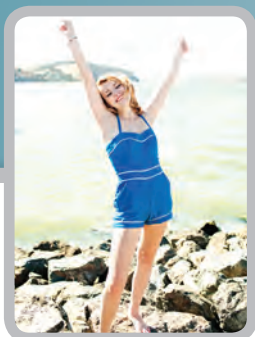
## Experience

Prior to receiving an Invisiport, Rachel received her nutrition intravenously through a PICC. "With a PICC, I had difficulty taking a shower. I couldn't be a lifeguard or teach swimming lessons as I had done in the past. In fact, I couldn't go swimming at all. I was constantly worried about getting an infection because my PICC was essentially an open wound in my arm. Ultimately, I did have one infection related to my PICC. My PICC also was an obvious neon sign that there was something wrong with me, requiring me to explain my condition to others." After enduring seven different PICCs during a period of 18 months, Rachel and her family sought a better alternative to improve her quality of life.

## Invisiport Solution

The Invisiport offers a microinvasive, patient-friendly alternative to traditional chest ports and peripherally inserted central catheters (PICCs). It is intended to be used in patients suffering from diseases that require long-term intravenous treatment, such as cancer, cystic fibrosis, Lyme disease or infection.

"My Invisiport has allowed me to regain some of my freedom. My Invisiport is so small that you can hardly tell that I have it. I can wear normal clothes and participate in more activities. I am leaving home for college in the fall and the Invisiport is going to allow me to blend in with all of my classmates," said Rachel.



Port convenience with PICC simplicity.

Invisiport Product Number: 010966

Stealth Therapeutics, Inc.  
406 Science Drive, Suite 400  
Madison, WI 53711  
(877) 262-4946  
[www.stealththerapeutics.com](http://www.stealththerapeutics.com)  
[customerservice@stealththerapeutics.com](mailto:customerservice@stealththerapeutics.com)